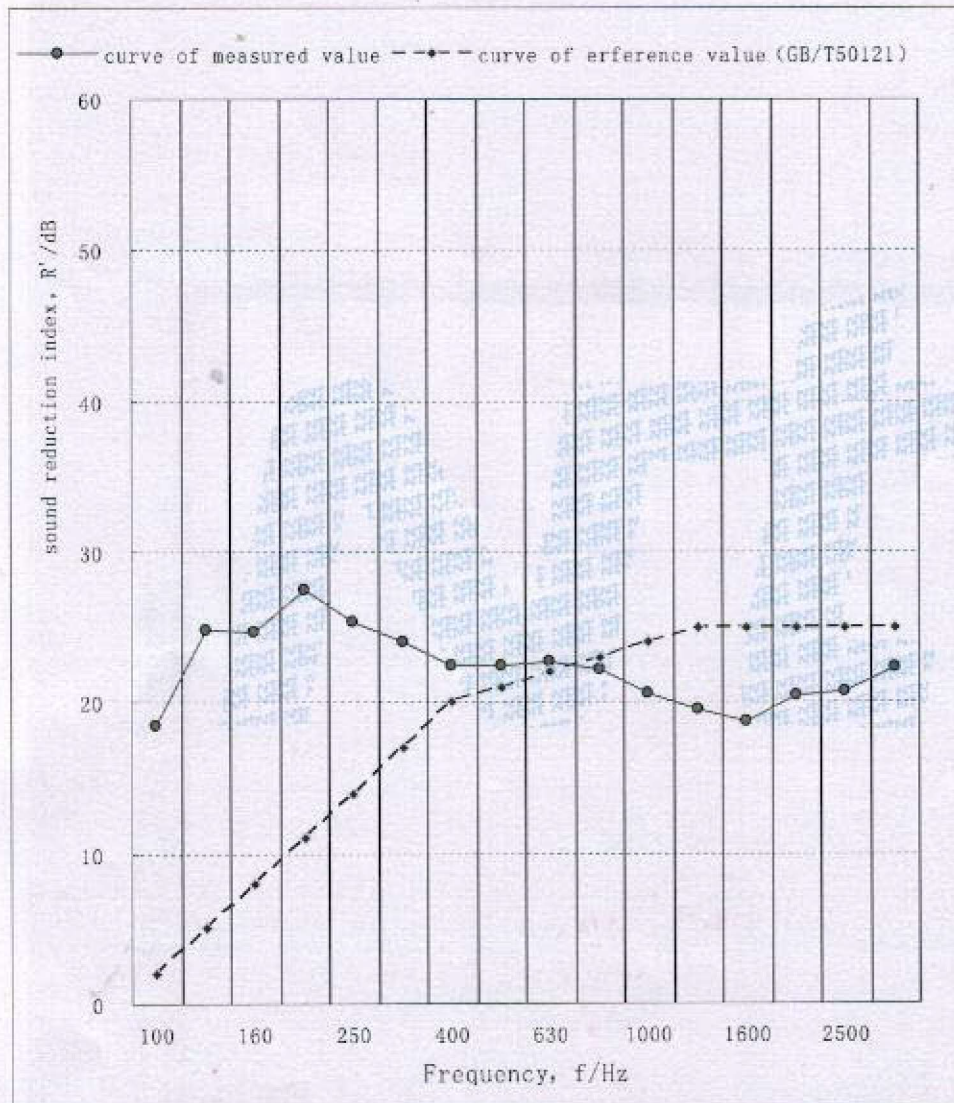


Data / Results of Test

sound reduction index



f/Hz	R /dB
100	18.5
125	24.8
160	24.7
200	27.5
250	25.3
315	24.0
400	22.4
500	22.4
630	22.6
800	22.2
1000	20.5
1250	19.5
1600	18.7
2000	20.4
2500	20.7
3150	22.3
4000	23.6
5000	25.3

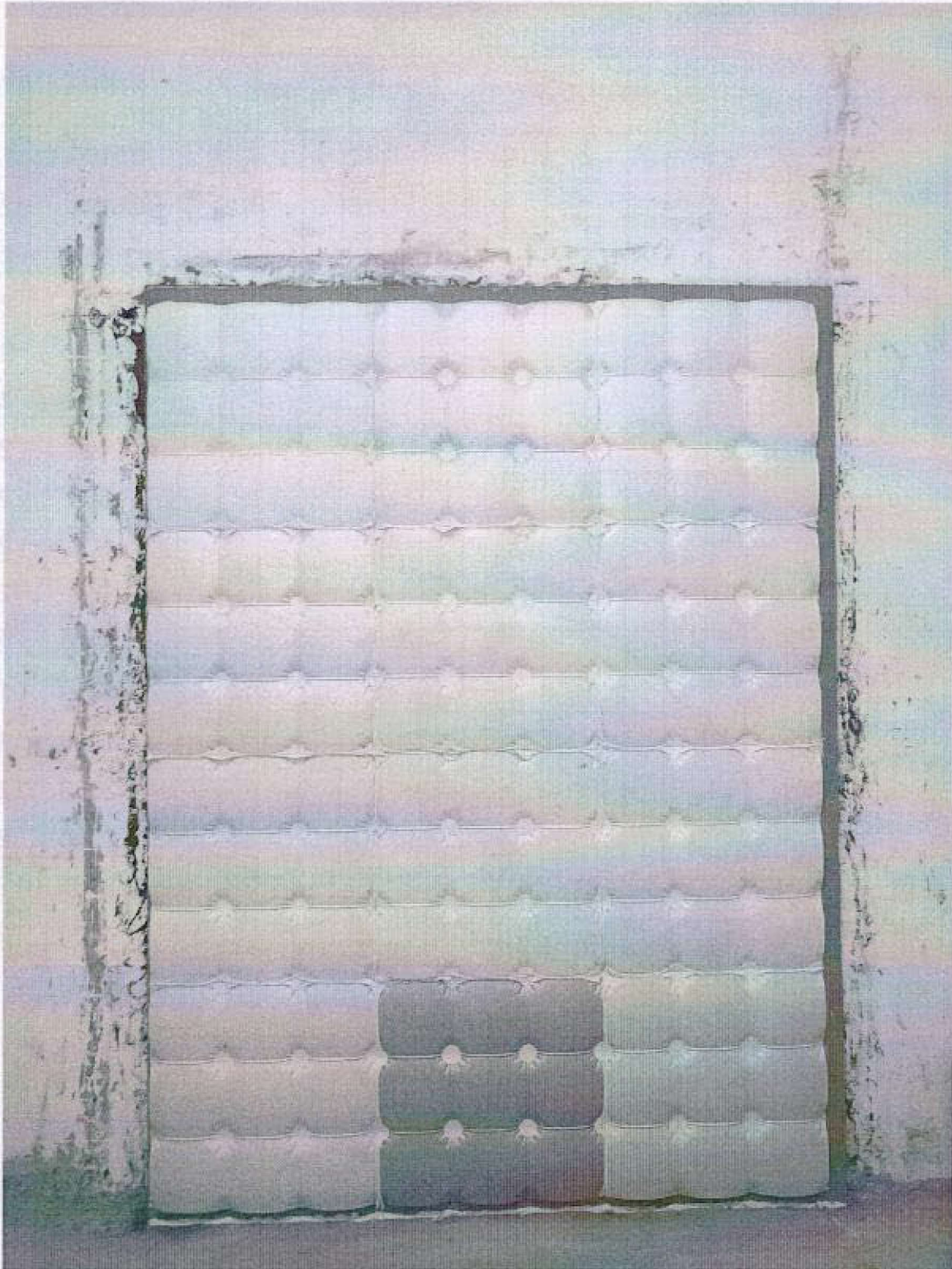
Weighted sound insulation R_w

Evaluation per GB/T50121: $R_w(C;C_{tr}) = 21(0;0)$ dB

The evaluation come form the laboratory measurement result, Is equal to ISO 140.

Data / Results of Test

Picture of the sample



Data / Results of Test

picture of the fiberboard

