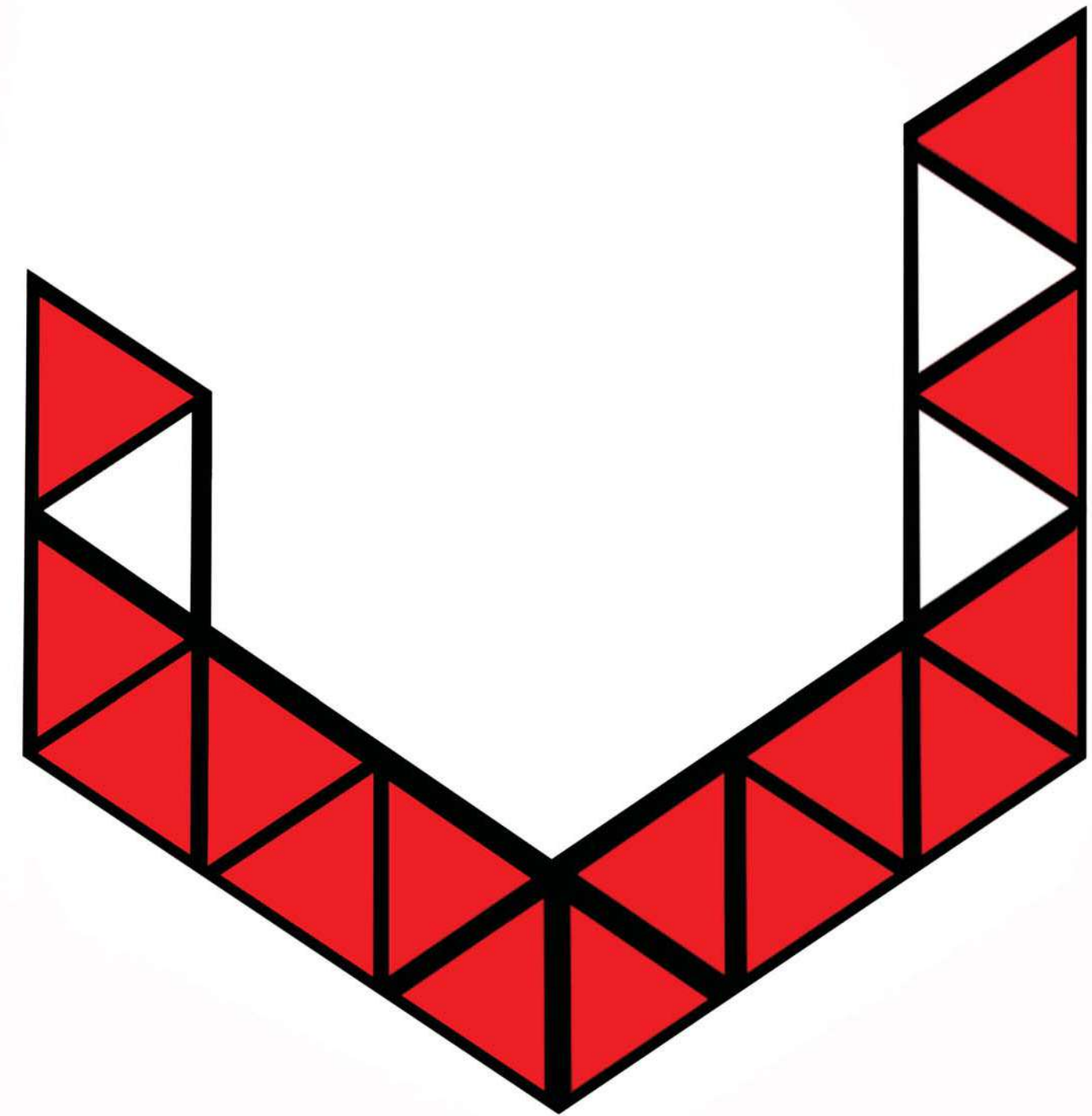
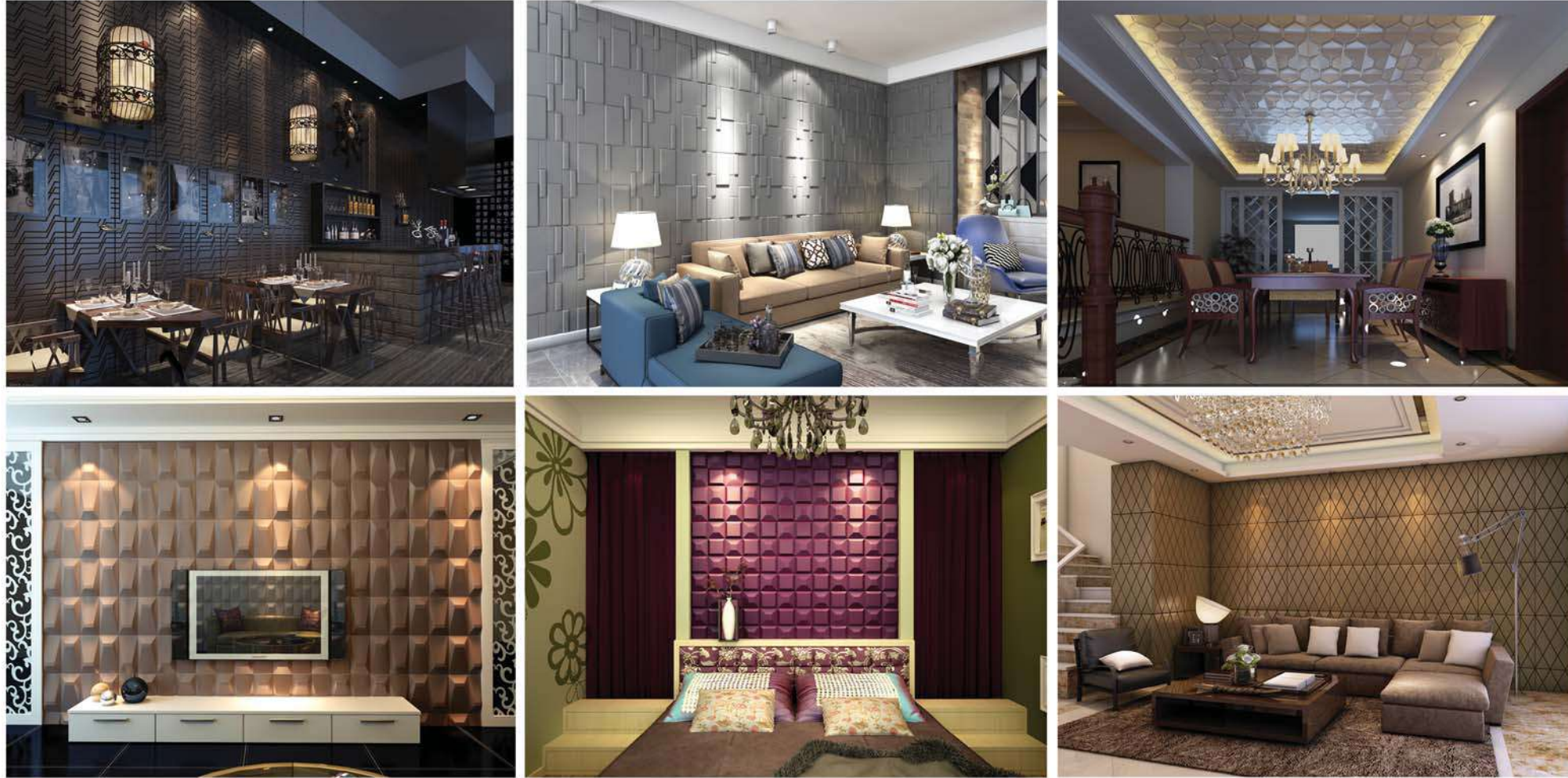


DECOR YOUR INTERIOR SPACE WITH DECO-GRAM 3D PANEL



DECO-GRAM 3D PANEL BY VIZION GROUP



DIRECCION:
URB. LOS ANGELES, CALLE 8A NORTE, CASA 26.
TEL.: +507 830-7598

SOFT LEATHER - MEMORY FOAM STRUCTURE
WWW.VIZIONGRP.COM @VIZIONPANAMA VIZIONGROUP@GMAIL.COM

DECO-GRAM

BY VIZION GROUP



1. What's the Soft Leather Panel

- The panel is constructed by high quality PU Leather and high density memory PU foam, no back board nor glue.

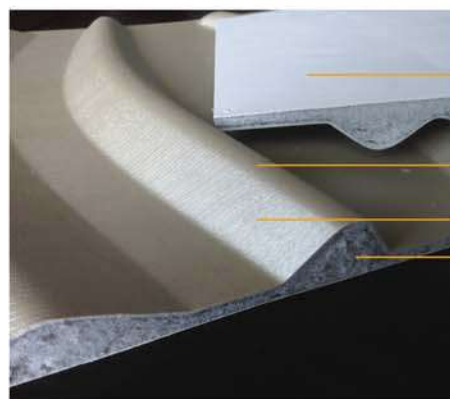
2. What's the features

- Light weight, beautiful designs, easy to clean and install, safe,
- No need for high temperature and pressure to make 3D relieves.
- To make sure the long life-span of the PU leather, it uses fire retardant and ZERO Formaldehyde emission.
- Widely use on interior wall and ceiling



3. Why us

- We execute strict management in quality control.
- We never stop researching and creating any possible ideas.
- The price is a competitive level which provides the quality, service and product life-span.



- Back side is covered by PU leather too. It's to prevent the moisture from the wall
- Surface is covered by PU leather.
- Water proof coating
- Soft memory foam (Fire Retardant) inside

Suitable for Wall & Ceiling in:

Public Areas	Private Areas	Commercial Areas
Retail Shop	Home Theatre	Hotel
Lounge	Bedroom	Cinema
Window Display	Living Room	Theatre
Kindergarten	Wall and Ceiling	KTV Room
Baby Center	Wardrobe	Night Club
Circle Column	Door	Restaurant
	Ground Mat	Beauty Salon
		Cafe Shop

Product Features

Random Mix

Free Match

Light & Changeable

Unlimited Creativity



Zero - formaldehyde

It's perfectly realized and certified to ZERO formaldehyde emissions by SGS.



Water and Moisture proof

Because of the excellent pu leather on the back and the bamboo charcoal fiber in the foam, it makes the panels waterproof and moistureproof.



Fire retardant

The fire retardant performance reaches B in EN13501 and was certified by SGS. It also produces very low smoke, and it is the smoke created by the bamboo charcoal after burning will not irritate.



Sound proof

Because of the sharp 3D inclined block faces and the high density foam inside, the sound will be faded and absorbed gradually during the rebound between panels.



Soft and high rebound

The panel is composed of high density foam. Its high rebound means no ruffle and never deform. It has excellent effect of collision avoidance.



Easy installation

No board on the wall, and no nail during installation, just use silicon to stick directly, quick and easy install.



Secondary use

After a period of time, if the panels must be removed, they can be torn off and installed on other wall.



Safety

Because of the light weight and soft surface, even if the panels falls off, it won't hurt people.



Bend easily

The panel adapts, when there is a circle or square column or a corner.



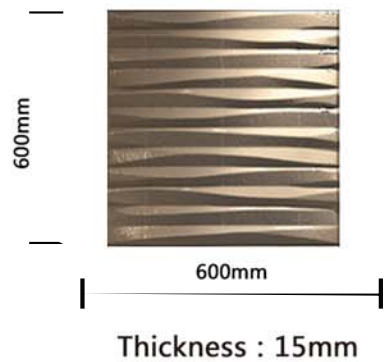
Acoustic absorption

The holes in the thick foam absorbs the sounds around.

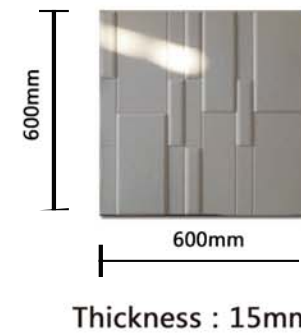


Bedhead

Chamber



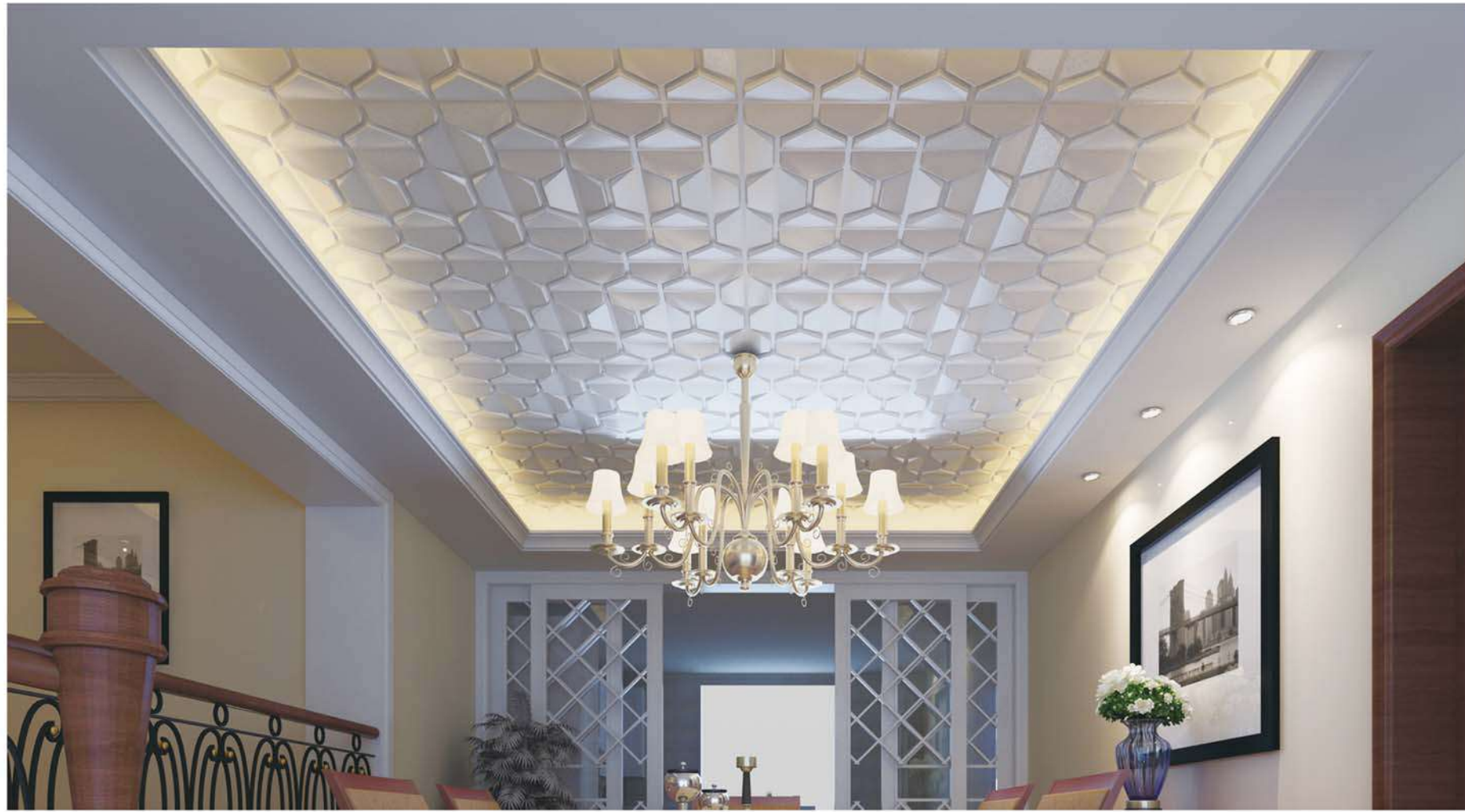
Item No: DNA
Size: 600x600x15mm (±1mm)



Item No: Tommy
Size: 600x600x15mm (±1mm)



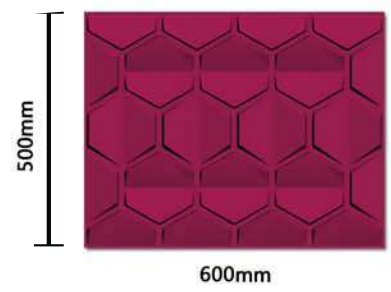
Sofa wall



Dinning Room



Living Room



600mm

Thickness : 15mm

Item No: Nestle

Size: 500x600x15mm (±1mm)

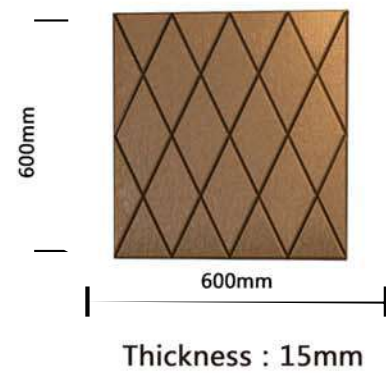


Living Room



Living Room





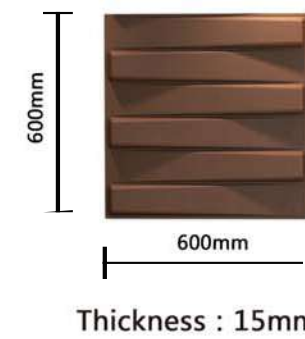
Item No: Crazy Diamond
Size: 600x600x15mm (±1mm)



Lobby entrance



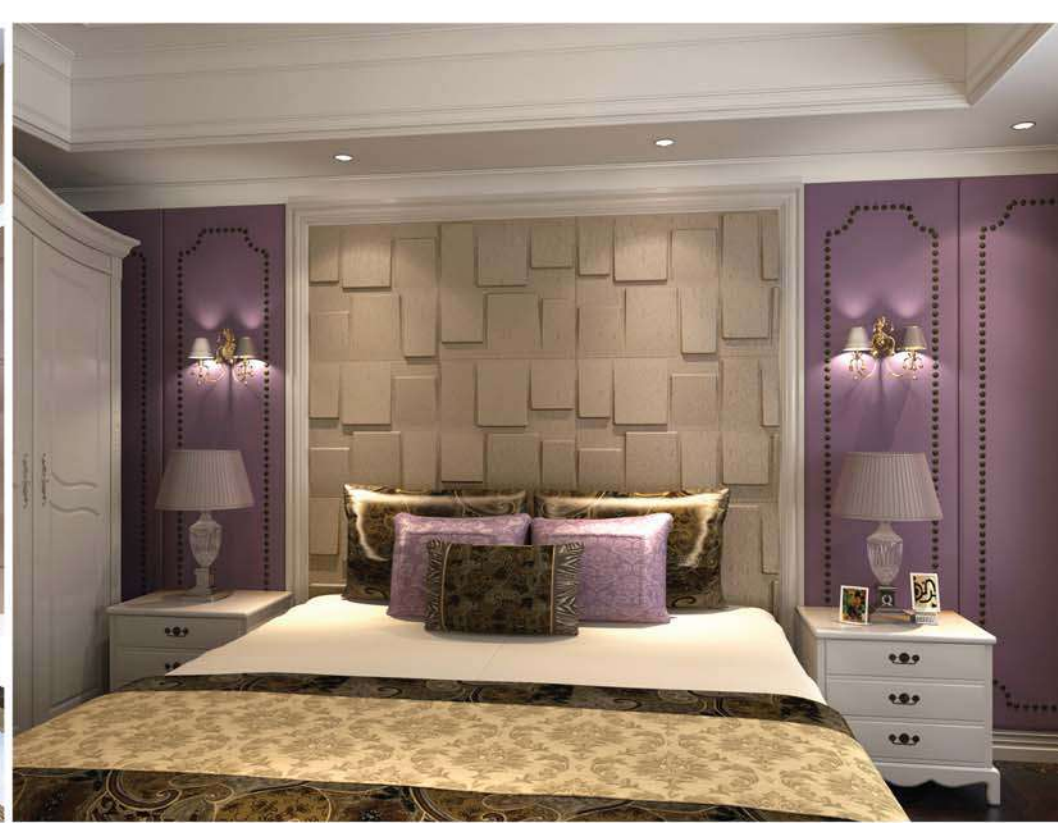
Bedhead



Item No: Seesaw
Size: 600x600x15mm (±1mm)



Bedhead

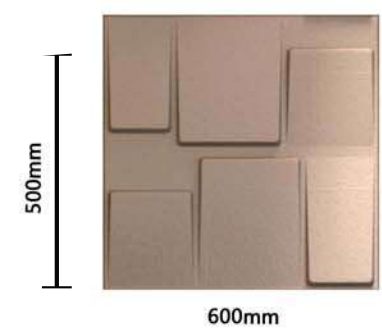


Living Room

Bedroom

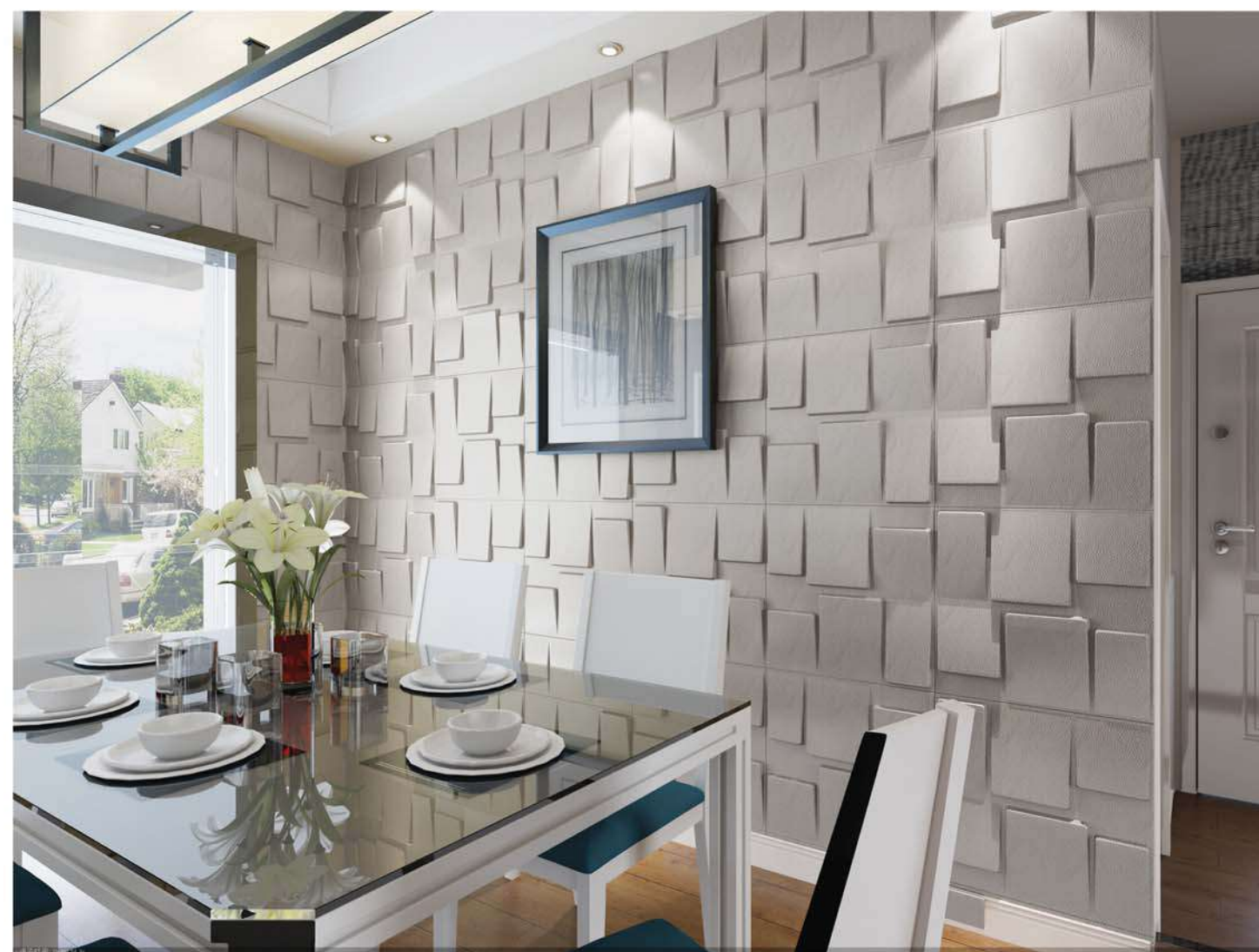
Living Room

Living Room

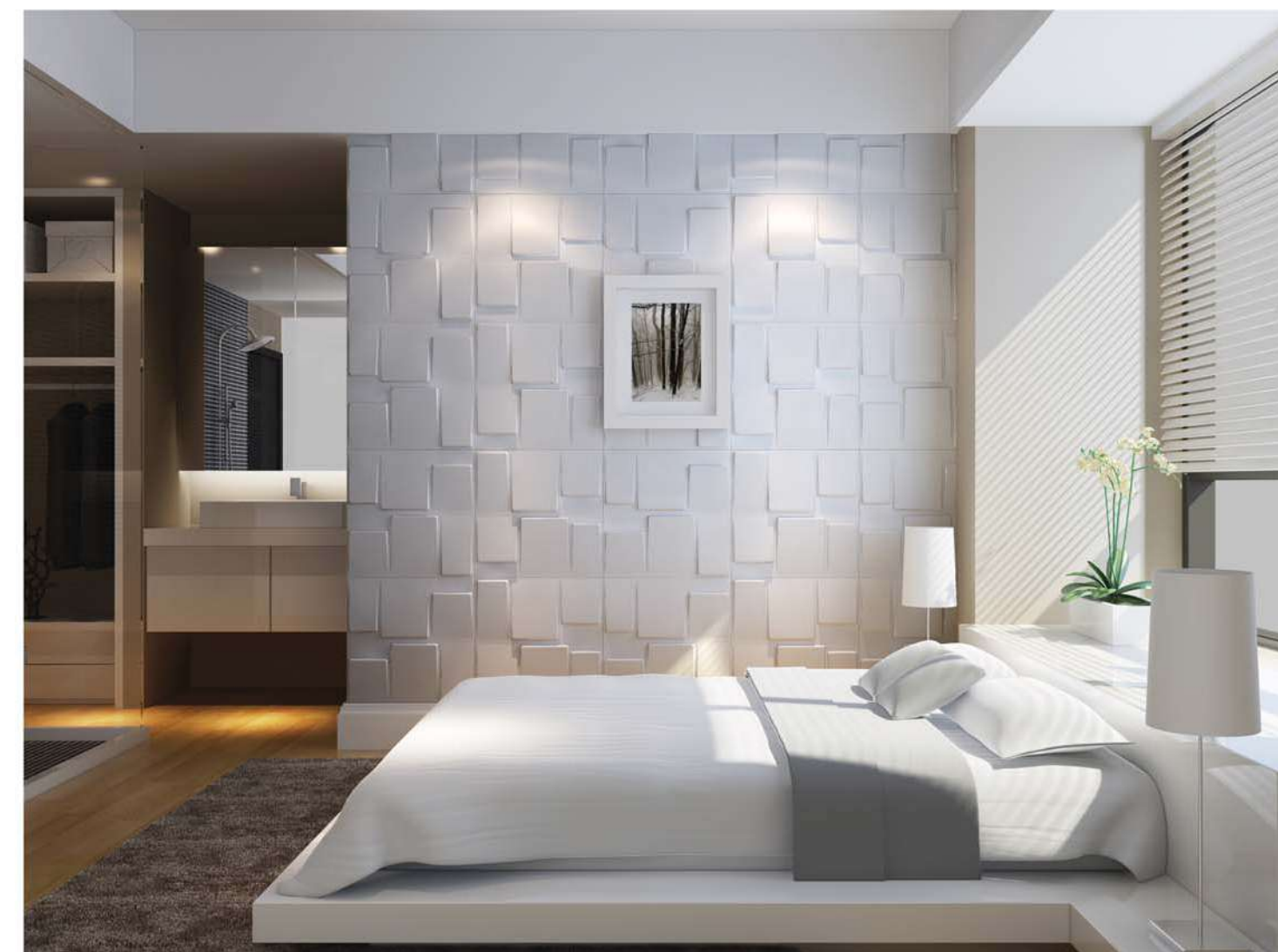


Thickness : 15mm

Item No: Nestle
Size: 500x600x15mm (±1mm)



Dining Room



Master Bedroom



Ceiling in Rest room



Ceiling in Restaurant room



TV wall



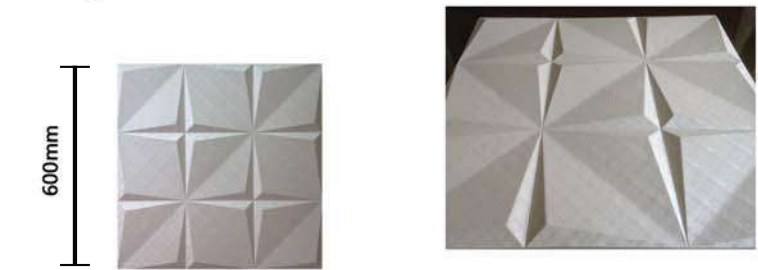
Ceiling in Restaurant room



Hotel Bedhead



Living Room



600mm

600mm

Thickness : 15mm

Item No: LV III

Size: 600x600x15mm(±1mm)



TV wall



Master Bedroom



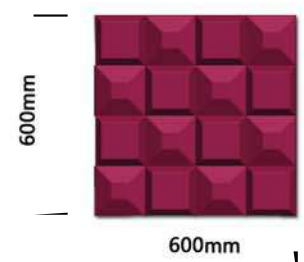
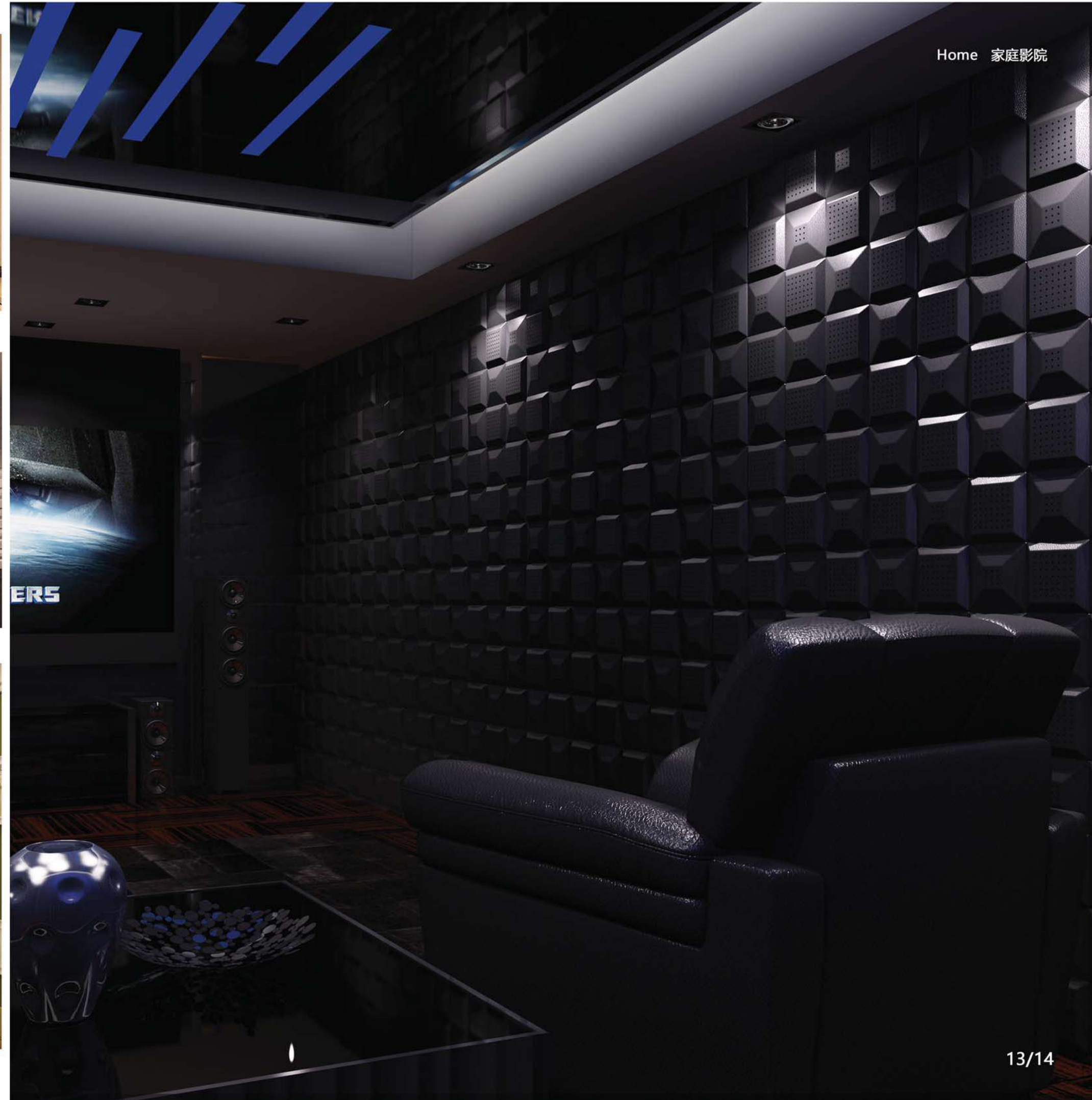
Reading room



Chamber



Sofa wall



Thickness : 15mm

Item No: MATRIX
Size: 600x600x15mm (±1mm)



Bedhead



Living Room

Living Room

Bedroom

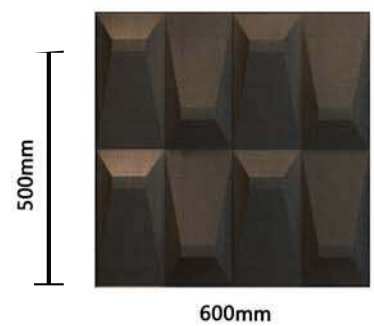
Living Room



Dining Room



Living Room



Thickness : 15mm

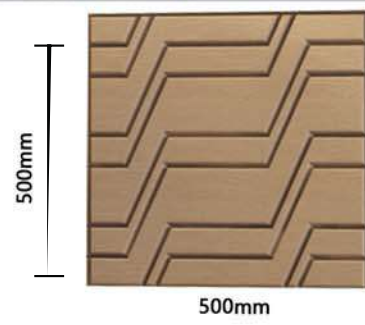
Item No: Moon Waves
Size: 500x600x15mm (±1mm)



Lobby



TV Stand



Thickness : 15mm

Item No: Asparagus
 Size: 500x500x15mm (±1mm)

Installation guide I



Make sure the surface of the wall is clean. For lime wall, please paint with a coat of latex. Square off the wall according to the size of panels.



Prepare the tools and materials as pictures. Apply the silicon on 4 corners and middle on the back of panel. Then, apply the Hot-melt glue on 4 corners.



Apply the first panel on the lined bottom middle position, then, go ahead with the neighbour panels by the same way. When applying on the wall, press a little bit for around 15 seconds to make sure of no gap between. When the size of the wall won't match the panels, cut the panels by utility knife as need.



When there is outlet, measure the position on the panel and cut. Then put the inner box in the hole, cover the outlet.

INSTALLATION GUIDE



Tools:
Contact glue & Brush



STEP 1:
Make sure the surface of the wall is flat and clean. Measure the outline and mark.



STEP 2:
Refer to the panel size, measure and mark each unit on the wall



STEP 3:
Brush the contact glue on the marked lines and in the middle of each cell



STEP 4:
Brush the contact glue around the edge and middle on the back of each panel.



STEP 5:
After 5-10 minutes of the step 4, apply the first panel on the bottom middle position. Then, go ahead with the neighbour panels until finish.

Texture : Strong silk



Texture : Cross with sparkle



Texture: Slim silk

